



RESIDENTIAL PROVISION

PROSPECTUS



Welcome to the Residential Provision

Oakfield School is a special school providing care and education for pupils who experience Social, Emotional and Mental Health needs.

I am delighted to welcome you to the Residential Provision, a provision and community which we are very proud to be a part of.

We believe that education is about acquiring good personal and thinking skills, developing communication and ICT skills; it is about becoming creative and reflective.

We believe that education is also about developing self-confidence, nurturing socially and emotionally and becoming independent, able to make sound lifestyle choices based on enquiry and reasoning.

All our pupils will be treated fairly and with respect.

We believe we should set challenging targets for both staff and pupils, building on strengths and striving for improvements.

We aim to promote high standards in lessons and behaviour, we will have effective systems for reviewing and developing our practice as part of our self-evaluation and quality assurance programme.

Our 'GOOD' (*Ofsted, March 2022*) residential provision provides each individual pupil with specific care tailored to their own needs.

Each pupil is fully involved in developing their Individual Behaviour Education Care Plan aimed at developing independence, self-reliance, confidence, self-esteem, social and independent living.

Sarah Cockerline
Head of Care

OUR PROVISION

THE IMPACT

IMPACT OF THE RESIDENTIAL PROVISION

Our Residential Provision is a safe and secure environment where pupils can feel at home, relax and feel supported, enabling pupils to learn and achieve.

A 24 hour wrap around curriculum helps support and improve attendance, achievement and attainment within the school and provision.

The Provision provides a social education, which has a major impact on cognitive development which includes: social, emotional, behavioural, self-esteem, confidence, relationships building and independence.

The Provision provides enriching opportunities, engaging activities and social experiences, to help them develop and progress at Oakfield School.

The Provision improves pupils' attendance.

A clear structure and routines with specialist staff who are experienced in working with children with complex needs.

RESIDENTIAL OUTCOMES

- To improve attendance
- To develop life skills
- To support students to identify and better manage their emotions
- To provide consistent, clear, firm and fair boundaries and expectations
- To plan and deliver new experience opportunities
- To promote independence
- To support learning

ADMISSIONS

JOURNEY TO A BRIGHTER FUTURE

Oakfield School is a special school providing care and education for pupils who experience Social, Emotional and Mental Health needs.

Age range: 11 to 16 years (KS3 and KS4)

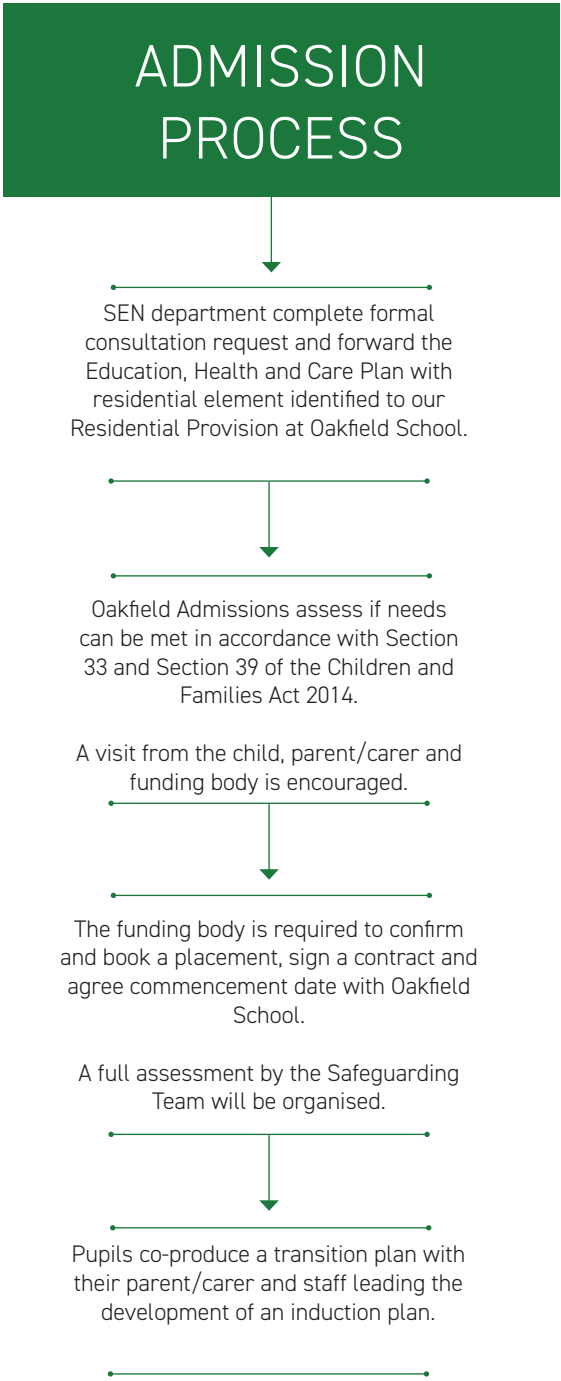
Type of Placements: Day and Residential (Monday to Friday, 38 weeks per year)

Each pupil is assessed through their Education, Health and Care Plan, and an individual package is designed with the pupil.

All residential boarding places require funding.

Please contact Oakfield School should you require any additional information.

Tel: (01482) 854588
admin@oakfieldhull.co.uk



OUR HOUSES

HOME FROM HOME

At the heart of Oakfield School are our residential houses, a community that nurtures and drives the pupils to be the best version of themselves.

Oakfield School has a focus of stretching and challenging each individual pupil in order to achieve their potential.

Our house system is a key part of pupils' development.

Please see our 'Residential Provision leaflet' for more information regarding our houses.

Our six houses are:

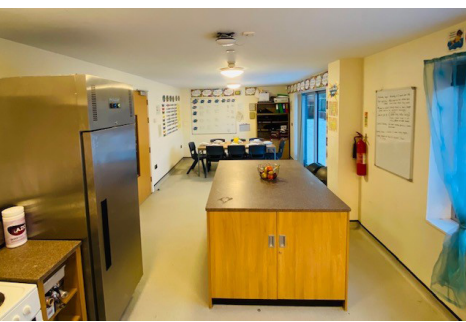
- Hazel
- Maple
- Pine
- Hawthorn
- Willow
- Cedar



EXTENDED DAYS PROVISION

Our 'Extended Days Provision' caters for pupils who access the Residential Provision on extended evenings, after the school day.

Please see our 'Extended Days Provision leaflet' for more information on the programme of activities and the aims of the service.



PINE HOUSE

Pine House stands for promoting independence in a nurturing environment. In the house, pupils take part in CoPE (Certificate of Personal Effectiveness) which is a programme designed to promote independence and life skills.



HAWTHORN HOUSE

Hawthorn House is an induction house catering for male pupils. Pupils are supported and taught social and emotional development by specialist staff.



WILLOW HOUSE

Willow House caters for female pupils across all year groups. This gives the young people new opportunities, experiences and focuses on their individual needs.



CEDAR HOUSE

Cedar House is currently home to our Residential Cook. The cook prepares healthy, balanced and nutritious meals for pupils. Pupils have access to the Residential Recreation and Art room. Cedar House can also be adapted to suit the needs of a pupil with physical disabilities.

A 'GOOD' ALL-AROUND PROVISION

We believe it is every pupil's right to expect excellent teaching of an enriched and engaging curriculum, in a safe learning environment, which will enable them to reach their full potential so that they become prepared for adult life.

SUPPORTING THE CURRICULUM

The Residential Provision supports the school by providing a 24 hour wrap around curriculum. This enhances pupil achievement and attainment within the school.

Residential pupils are supported throughout the school day by the residential staff, giving them the extra support that they may require.

PARENT SUPPORT GROUP

Oakfield School has a Parent Support Group where parent/carers have the opportunity to meet and talk with other parent/carers who are in a similar situation, allowing them to share their experiences in a relaxed, and safe environment.

Parent/carers can share information about the needs of their children, school services, local policies, funding sources, emotional support and much more.

Oakfield School recognises that protecting and safeguarding children and young people is a shared responsibility and depends upon effective joint working between agencies and professionals that have different roles and expertise.

Individual children and young people, especially some of the most vulnerable children and those at greatest risk of social exclusion, will need coordinated help from health, education and children's social care services.

The voluntary sector and other agencies also have an important role in protecting and safeguarding children.

Oakfield School has a responsibility to protect and safeguard the welfare of children and young people they come into contact with. The need for guidelines and procedures is important to ensure that this is done with understanding and clarity.

ACTIVITIES

During the evenings in the residential, we provide an outstanding range of on-site and off-site activities. These activities are carefully planned using targets from the Personal Social Profile.

Pupil's achievements during activities are evaluated against the Personal Social Profile and the pupil deficit areas are highlighted.

Pupils take part in two activities on an evening and regular cultural experiences.

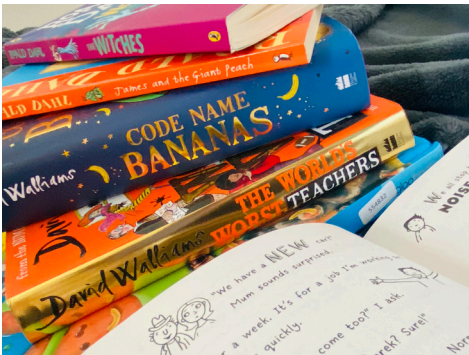
See our additional 'Residential Provision leaflet' for further information.

RESIDENTIAL CATERING

We have an on-site residential cook who prepares healthy, balanced and nutritional meals which cater for all dietary requirements.

Pupils are encouraged to try all food types and different cuisines from around the world.

The menus are updated weekly to ensure a diverse range of food is on offer. The menus are uploaded to the school website.



SAFEGUARDING

CONTACT

WE ARE HERE FOR YOU

Contact with Oakfield School:

For further information about Oakfield School, please visit our website:

www.oakfieldhull.co.uk

Our school and residential policies are available on the Oakfield School website.

You are welcome to contact us to discuss elements of this prospectus or arrange a visit.

Contact with the Head of Care:

Sarah Cockerline
Head of Care

Tel: (01482) 854588
admin@oakfieldhull.co.uk

Oakfield School
Hopewell Road
Hull, HU9 4HD

 @SchoolOakfield





We would love to hear from you

Rachel Davies BEd (Hons)
Headteacher

Tel: (01482) 854588
admin@oakfieldhull.co.uk

Oakfield School
Hopewell Road
Hull, HU9 4HD
www.oakfieldhull.co.uk

 [@SchoolOakfield](https://twitter.com/SchoolOakfield)

