



Oakfield School



Welcome to issue 3 of the Oakfield School newsletter. During this half-term the school has remained firmly open and has offered all students a full curriculum either in school or via remote learning. We have continued to adapt to the ever-changing advice, protocols and initiatives regarding the covid pandemic. Oakfield continues to provide a safe and positive environment for students and staff.

Key Stage 3 Alternative Learning Provision (ALP)

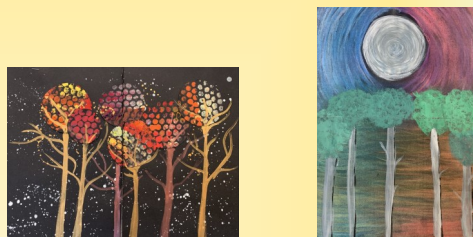


The Key Stage 3 ALP group have completed the first unit of their ASDA qualification through The British Boxing Association. The students have found this to be a very engaging aspect of their alternative learning. At Oakfield, we are able to adapt our approach and to find the style of learning most suitable for students on an individual basis.

During their boxing training, the students received very positive reports from the course instructor, with comments such as “showed great determination and fitness”, “has the potential to become an accomplished young boxer” and “has been polite and well-mannered and engages well in the lesson”.



Art



In Art lessons recently, students have been working on the topic of 'Seasons'. Key Stage Three pupils have explored the changes of colour as the seasons change from one to the next. They have also incorporated the use of texture in all their work by using different mediums such as paint, pastel and collage.

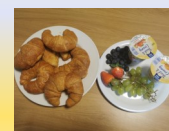


Residential

Residential is currently working at a reduced capacity due to the current covid-19 pandemic, however this has not stopped the pupils and staff from taking part in a wide variety of activities. Pupils still have an array of options for 1st and 2nd activities including Gym, Mario Kart, Cooking, ICT, Yu-Gi-Oh, Football, Sports Hall Games and many more.

Residential has a tradition of hosting cultural evenings, with February celebrating Chinese New Year. The idea behind each cultural evening is to allow students to experience a variety of activities based on different cultures. This month's cultural evening will include a range of activities such as pin the tail on the OX, an arts section making authentic dragon masks, scavenger hunt with Chinese words needing to be decoded, chopstick challenge and an authentic Chinese meal made by the residential catering staff.

After lengthy discussions with council members, residential has decided to bring back its most popular event; the breakfast mornings. Over the coming weeks, each house will choose a different menu which shows their interpretation of the perfect breakfast.





February 2021 Newsletter Issue 3

Covid

Since the beginning of this term, Oakfield has had Lateral Testing in place. All staff and students working on the school premises have been offered testing. Although this has not been compulsory, it is encouraged. The current advice from the government is that students should be tested twice on their return to school. Staff are offered a twice-weekly test. Anyone testing positive in school is required to leave the building as soon as possible (and to isolate until able to do so) and then to isolate at home for ten days. The track and trace protocol is then set in motion.

The general advice around covid remains the same. In order to reduce potential disruption to learning for large groups of students you must keep your children off school if they have any COVID-19 symptoms. Increasingly we are finding that those testing positive have not had the main symptoms of a persistent cough, high temperature or loss of taste/smell. Students with cold like symptoms or a sore throat, headaches and aching muscles are also testing positive so please be cautious and if in doubt keep your child at home and get a test! This also applies to anyone in your household, if you suspect Coronavirus you **MUST** keep your children at home pending the test result. In school, we have installed new handwashing facilities at entrances to enable staff and students to wash their hands as they enter and leave the buildings. Handwashing is an integral part of our system with which to keep everyone safe.

See the latest advice at <https://www.gov.uk/coronavirus>

Outdoor Education



During the winter months and due to the current pandemic, Outdoor Education has been forced indoors. This has not prevented the department from delivering a high quality alternative curriculum with Year 9 and Year 10 pupils.

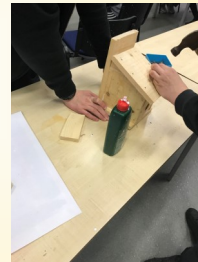
Year 9 have focused on the new modules of Search and Rescue which will see them gain a first aid certificate from St John Ambulance.

This will give pupils an excellent skill which can be used across all aspects of their lives. Pupils have really enjoyed acting-out scenarios in a COVID safe environment. Using the latest in technological advancements, pupils have been learning how to cope in an emergency, conduct a primary survey and check a casualty and to place them in a safe airway position.

Students have been undertaking the climbing module as a part of the Level One NIBAS Scheme. They have been using the school climbing wall to gain confidence in order to eventually use the local climbing centre once it reopens.



Year 10 students have continued to work towards their Duke of Edinburgh Bronze Award. They have completed the Physical section and have now moved onto their Skill. Students have requested to work on Bushcraft cooking skills on site. The Outdoor Education department has continued to run its Volunteering Conservation Project with a variety of tasks such as making bird boxes, bug hotels and feeders.



The Outdoor Education department continues to be unique in this area of the country, in that it offers a variety of outdoor-based learning which is fully accredited by a range of nationally-recognised organisations. Students access Outdoor Education in Years 9 and 10.

Website

We are currently in the process of renewing and improving our school website. The new site will contain more information and some up to date photographs. Several changes have already been made to the site with more on the way. The school web address will continue to be www.oakfieldhull.co.uk

Home Learning

If your child experiences any difficulty in access their learning from home, or in understanding any of the work being set, please contact the school for advice.

stay safe