

2019 KS4 School Dashboard

for governors & school leaders

Produce custom dashboards
at fftaspire.org

Oakfield

LA City of Kingston-Upon-Hull DFE 8107007 Produced November 2019 Version 1

What it is

Seven easy-to-use reports that help governors and school leaders to evaluate school performance using the latest 2019 DFE school performance indicators.

What it tells you

- What are the strengths and areas for improvement in your school?
- How does attainment and pupil progress compare to the national average over the last three years?
- How are you performing in different subjects?
- Do you have any under-performing groups of pupils?
- How might the context of your school affect performance?
- How does pupil attendance compare to the national average?

Important information for analysing 2019 results

Reformed GCSEs (based on a 9-1 grade scale) are included from 2017 onwards where applicable. Grade 5 represents a 'strong' pass; grade 4 a 'standard' pass.

To provide trends over time and context for the 2017 and 2018 results, FFT converts pupil results from previous years to the new 9-1 grades. The blue dotted line on trend charts highlights the change.

About the data shown

1 2 3

Actual results

Actual results for your school, using a range of measures such as averages and thresholds.



Gauges

These display headline indicators and whether actual results and pupils' progress are in line with, or significantly above or below, the national average.

ESTIMATED

← → 1 2 3

Pupil progress

The value added progress that your pupils have made from one key stage to the next. FFT compares your actual results to the estimated results based on the progress of similar pupils nationally.



Statistical significance

Green plus signs and red minus signs highlight where either actual results or pupils' progress is significantly above or below the national average.



Trends

The dashboard analyses school performance over 3-5 years. Any significant year-on-year improvement is highlighted using an up arrow. Significant declines in performance are highlighted with a down arrow.



Strengths & weaknesses

These highlight key pupil groups and subjects where progress is above or below the national average.

Working in partnership with



Data sources

Generated from FFT Aspire which includes data sourced from the DfE (National Pupil Database) and data calculated by FFT. FFT is accredited as a DfE supplier to receive early access to ASP data. Headline performance indicators will be consistent with the DfE School Performance Tables and ASP.

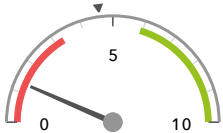
Overview

KS4 Attainment 2019 · Actual results

12 pupils

Attainment 8 (Overall)

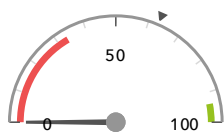
1.3 -



Significantly below the national average (4.6) ◀

% English & Maths (Grade 4+)

0% -



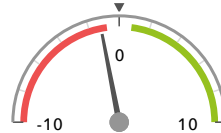
Significantly below the national average (63%) ◀

KS4 Progress 2019 · Value Added

12 matched pupils

Progress 8 (Overall)

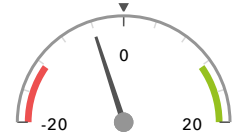
-1.22 -



Significantly below the national average (0) ◀

% English & Maths (Grade 4+)

-4%



In line with the national average (0%) ◀

KS4 higher and lower performing pupil groups 2019

	Higher performing	Lower performing
Overall achievement pupil progress		EHC Plan (12) - First language English (12) - White (12) -
English pupil progress		EHC Plan (12) - First language English (12) - White (12) -
Mathematics pupil progress	FSM (ever) (11) Lower attainers (10)	Joined before Y10 (10) EHC Plan (12) First language English (12)
Subjects pupil progress	Mathematics GCSE (12) +	English Language GCSE (11)

Attainment & progress

KS4 Attainment 2019

12 pupils

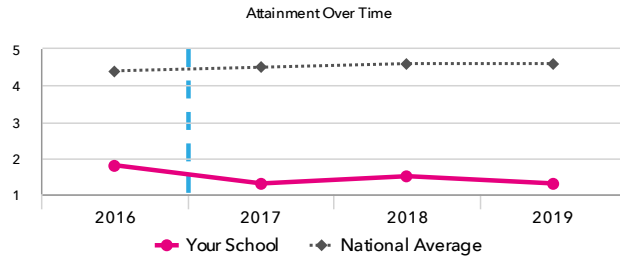
Attainment 8 (Overall)

1.3 -

FFT Rank



Significantly below the national average (4.6)



KS4 Progress 2019

12 matched pupils

Progress 8 (Overall)

-1.22 -

FFT Rank



Significantly below the national average (0)

% English & Maths (Grade 4+)

-4%

FFT Rank



In line with the national average (0%)

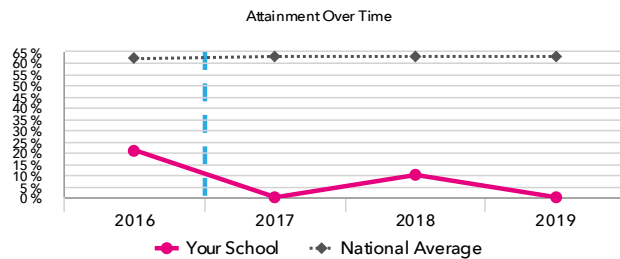
% English & Maths (Grade 4+)

0% -

FFT Rank



Significantly below the national average (63%)



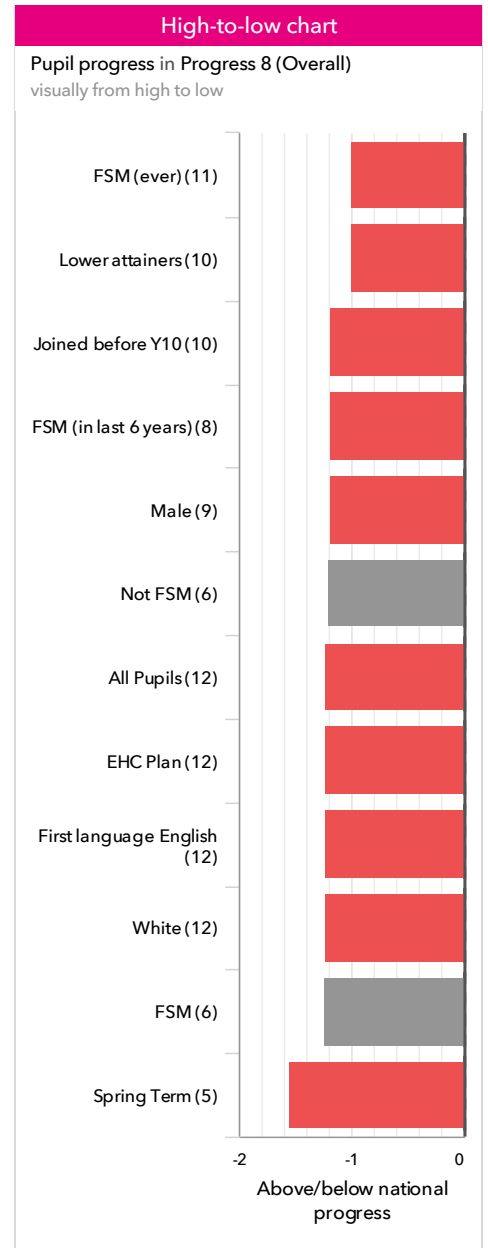
KS4 performance summary

	Actual results			Pupil progress		
	2017	2018	2019	2017	2018	2019
Number of Pupils / % Matched	8	10	12	100%	90%	100%
Attainment / Progress 8 (Overall)	1.3 -	1.5 -	1.3 -	-0.90	-1.49 -	-1.22 -
Attainment / Progress 8 (English)	0.9 -	1.3 -	1.0 -	-1.54 - ↓	-2.08 -	-1.91 -
Attainment / Progress 8 (Maths)	2.0 -	1.8 -	2.0 -	+0.37	-0.78	-0.06
Attainment / Progress 8 (Ebacc)	0.9 -	2.0 -	1.9 -	-0.69	-0.58	-0.28
Attainment / Progress 8 (Open)	1.3 -	0.8 -	0.4 -	-1.51 - ↓	-2.48 -	-2.47 -
% English & Maths (Grade 4+)	0% -	10% -	0% -	-2%	+8%	-4%
% English & Maths (Grade 5+)	0% -	0% -	0% -	-0%	-1%	-1%
% Ebacc (Grade 4+)	0%	0%	0%	-0%	-0%	-1%
% Ebacc (Grade 5+)	0%	0%	0%	-0%	-0%	-0%
% 5+ GCSEs (Grade 7+)	0%	0%	0%	-0%	-0%	-0%
Average entries per pupil	4.4 -	4.5 -	3.9 -	+2.6 +	+2.2 +	+2.0 +
Average entries per pupil (GCSE only)	4.0 -	4.4 -	3.8 -	+2.5 +	+2.4 +	+2.0 +
% Pupils taking 3 single sciences	0%	0%	0%	-0%	-1%	-1%

Pupil groups

KS4 Pupil groups performance 2019

	Pupils	Actual results			Pupil progress			
		Attainment 8 (Overall)	% English & Maths (Grade 4+)	% Ebacc (Grade 4+)	Progress 8 (Overall)	% English & Maths (Grade 4+)	% Ebacc (Grade 4+)	
Summary	All Pupils	12	1.3 -	0% -	0%	-1.22 -	-4%	-1%
Gender	Male	9	1.4 -	0% -	0%	-1.19 -	-4%	-1%
	Female	3	0.9	0%	0%	-1.31	-3%	-0%
DFE Prior Attainment	Higher attainers	1	1.6	0%	0%	-3.59	-21%	-5%
	Middle attainers	1	2.5	0%	0%	-1.09	-13%	-2%
	Lower attainers	10	1.2	0%	0%	-1.00 -	-1%	-0%
Pupil Premium	FSM (in last 6 years)	8	1.2 -	0% -	0%	-1.18 -	-3%	-0%
	Not FSM (in last 6 years)	4	1.6	0%	0%	-1.31	-6%	-1%
FSM	FSM	6	0.9 -	0%	0%	-1.24	-2%	-0%
	Not FSM	6	1.7 -	0% -	0%	-1.20	-6%	-1%
FSM Ever	FSM (ever)	11	1.3 -	0% -	0%	-1.00 -	-2%	-0%
	Not FSM (ever)	1	1.6	0%	0%	-3.59	-21%	-5%
Term of Birth	Autumn Term	3	1.0	0%	0%	-1.28	-0%	-0%
	Spring Term	5	1.6 -	0% -	0%	-1.54 -	-8%	-2%
	Summer Term	4	1.2	0%	0%	-0.77	-1%	-0%
SEN Group	EHC Plan	12	1.3	0%	0%	-1.22 -	-4%	-1%
EAL	First language English	12	1.3 -	0% -	0%	-1.22 -	-4%	-1%
Mobility	Joined in Y10 or Y11	2	1.8	0%	0%	-1.44	-7%	-1%
	Joined before Y10	10	1.2 -	0% -	0%	-1.18 -	-3%	-1%
Ethnicity	White	12	1.3 -	0% -	0%	-1.22 -	-4%	-1%



Oakfield

2019

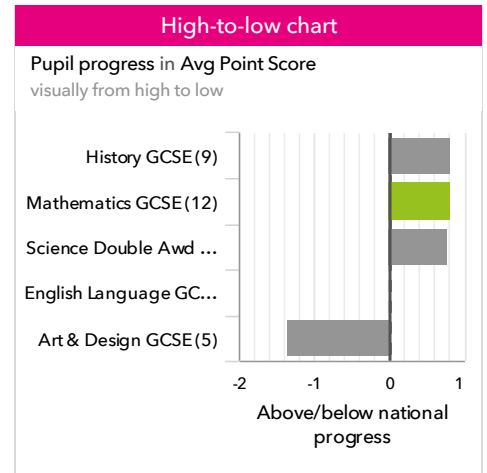
KS4

VA

Subjects

KS4 subject performance 2019

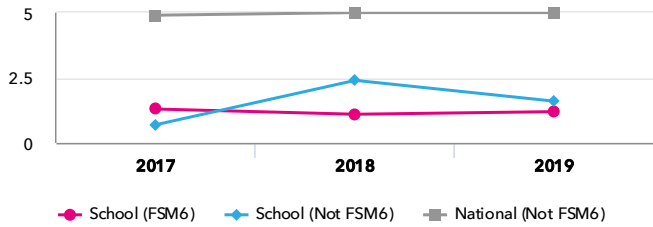
			Actual results			Pupil progress		
		Pupils	Avg Point Score	% Grade 4+	% Grade 7+	Avg Point Score	% Grade 4+	% Grade 7+
English and maths	English Language GCSE	11	2.3 -	9% -	0%	-0.00	-1%	-0%
	Mathematics GCSE	12	2.0 -	8% -	0%	+0.82 +	+4%	-0%
Ebacc Subjects	History GCSE	9	2.3 -	11% -	0%	+0.83	+2%	-0%
	Science Double Awd GCSE	9	2.7	22% -	0%	+0.78	+14%	-0%
Other High Value Subjects	Art & Design GCSE	5	1.8 -	0% -	0%	-1.35	-36%	-2%
	Constr & Built Env Non-GCSE	1	4.0	100%	0%	+1.07	+53%	-1%



Disadvantaged pupils

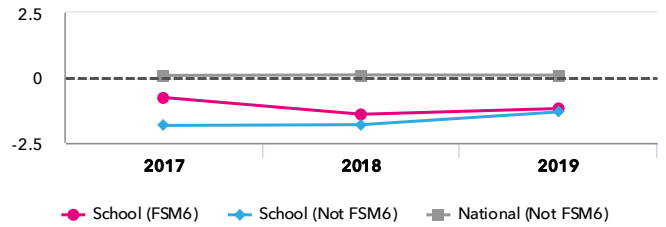
KS4 attainment for disadvantaged pupils 2019

Attainment 8 (Overall)

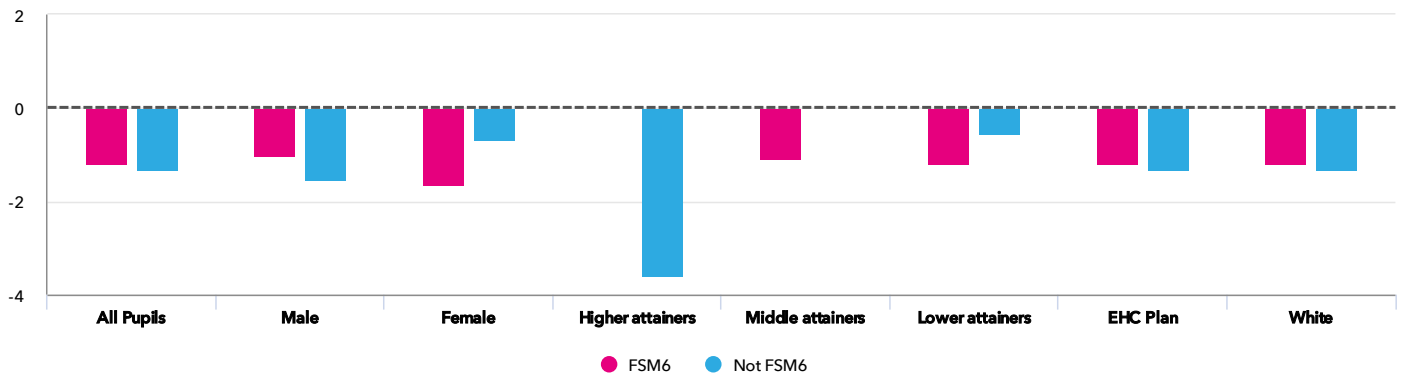


KS4 progress for disadvantaged pupils 2019

Progress 8 (Overall)



Progress gap Progress 8 (Overall)

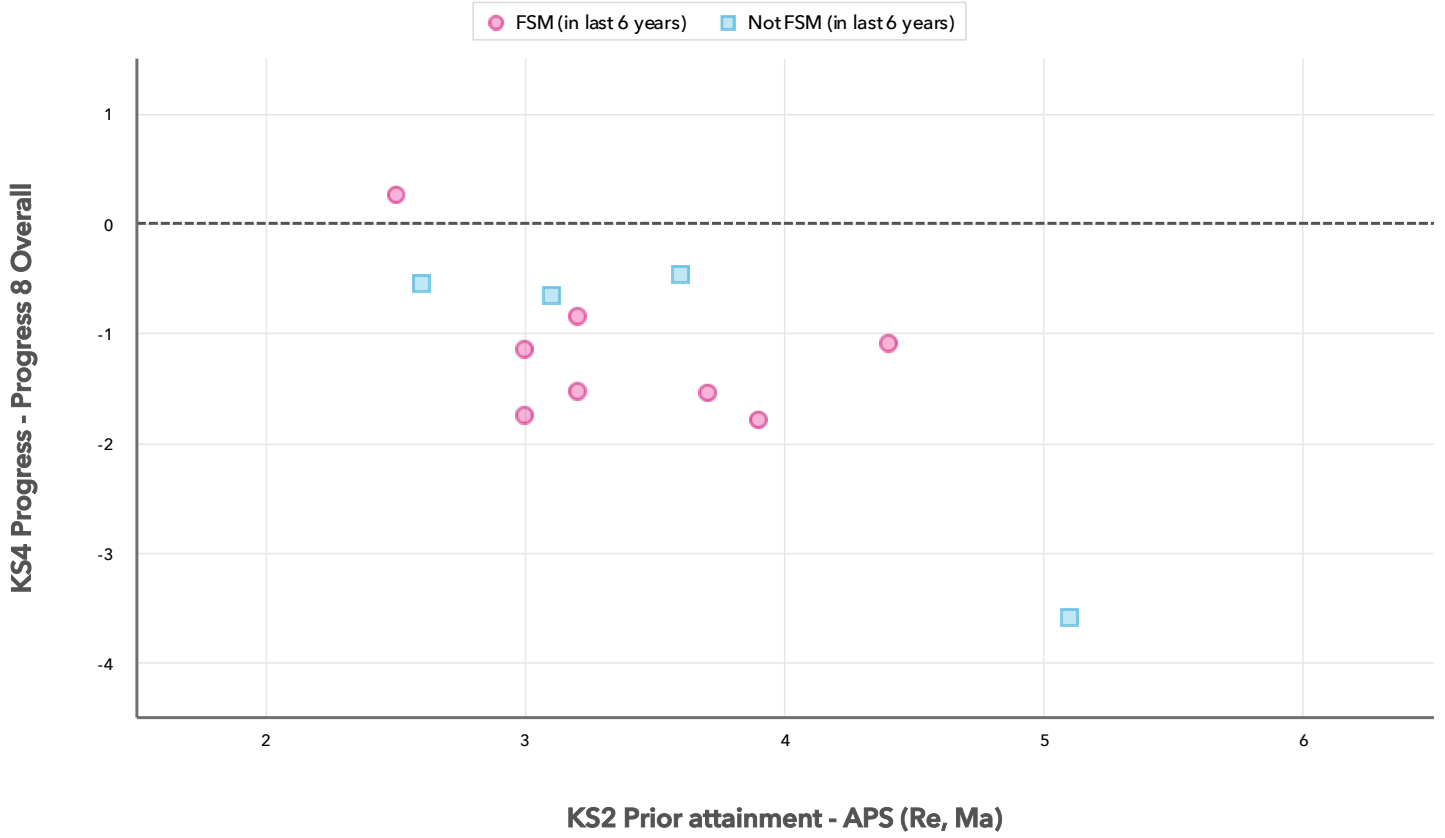


Attainment & progress

Pupils	Attainment			Progress					
	FSM6	Not FSM6	Attainment 8 (Overall)			Progress 8 (Overall)			
			FSM6	Not FSM6	Gap	FSM6	Not FSM6	Gap	
Summary	All Pupils	8	4	1.2	1.6	-0.4	-1.18	-1.31	0.13
Gender	Male	6	3	1.4	1.6	-0.2	-1.02	-1.53	0.51
	Female	2	1	0.6	1.5	-0.9	-1.64	-0.65	-0.99
DFE Prior Attainment	Higher attainers	-	1	-	1.6	-	-	-3.59	-
	Middle attainers	1	-	2.5	-	-	-1.09	-	-
	Lower attainers	7	3	1	1.6	-0.6	-1.19	-0.55	-0.64
SEN Group	EHC Plan	8	4	1.2	1.6	-0.4	-1.18	-1.31	0.13
Ethnic Group	White	8	4	1.2	1.6	-0.4	-1.18	-1.31	0.13

Scatterplot

KS4 Pupil scatterplot 2019 12 pupils highlighted by Pupil Premium



Context

Context · Year 11

		Pupils		Comparative profile 2018 / 2019		Absence during Key Stage 4		Persistent absence during Key Stage 4	
		School	School	National	School	National	School	National	
Summary	All Pupils	12	100%	100%	-	-	-	-	
Gender	Male	9	75%	51%	-	-	-	-	
	Female	3	25%	49%	-	-	-	-	
DFE Prior Attainment	Higher attainers	1	8%	41%	-	-	-	-	
	Middle attainers	1	8%	42%	-	-	-	-	
	Lower attainers	10	83%	11%	-	-	-	-	
Pupil Premium	FSM (in last 6 years)	8	67%	25%	-	-	-	-	
	Not FSM (in last 6 years)	4	33%	75%	-	-	-	-	
FSM	FSM	6	50%	14%	-	-	-	-	
	Not FSM	6	50%	86%	-	-	-	-	
FSM Ever	FSM (ever)	11	92%	33%	-	-	-	-	
	Not FSM (ever)	1	8%	67%	-	-	-	-	
Term of Birth	Autumn Term	3	25%	33%	-	-	-	-	
	Spring Term	5	42%	32%	-	-	-	-	
	Summer Term	4	33%	35%	-	-	-	-	
SEN Group	EHC Plan	12	100%	4%	-	-	-	-	
EAL	First language English	12	100%	83%	-	-	-	-	
Mobility	Joined in Y10 or Y11	2	17%	4%	-	-	-	-	
	Joined before Y10	10	83%	96%	-	-	-	-	
Ethnicity	White	12	100%	75%	-	-	-	-	